

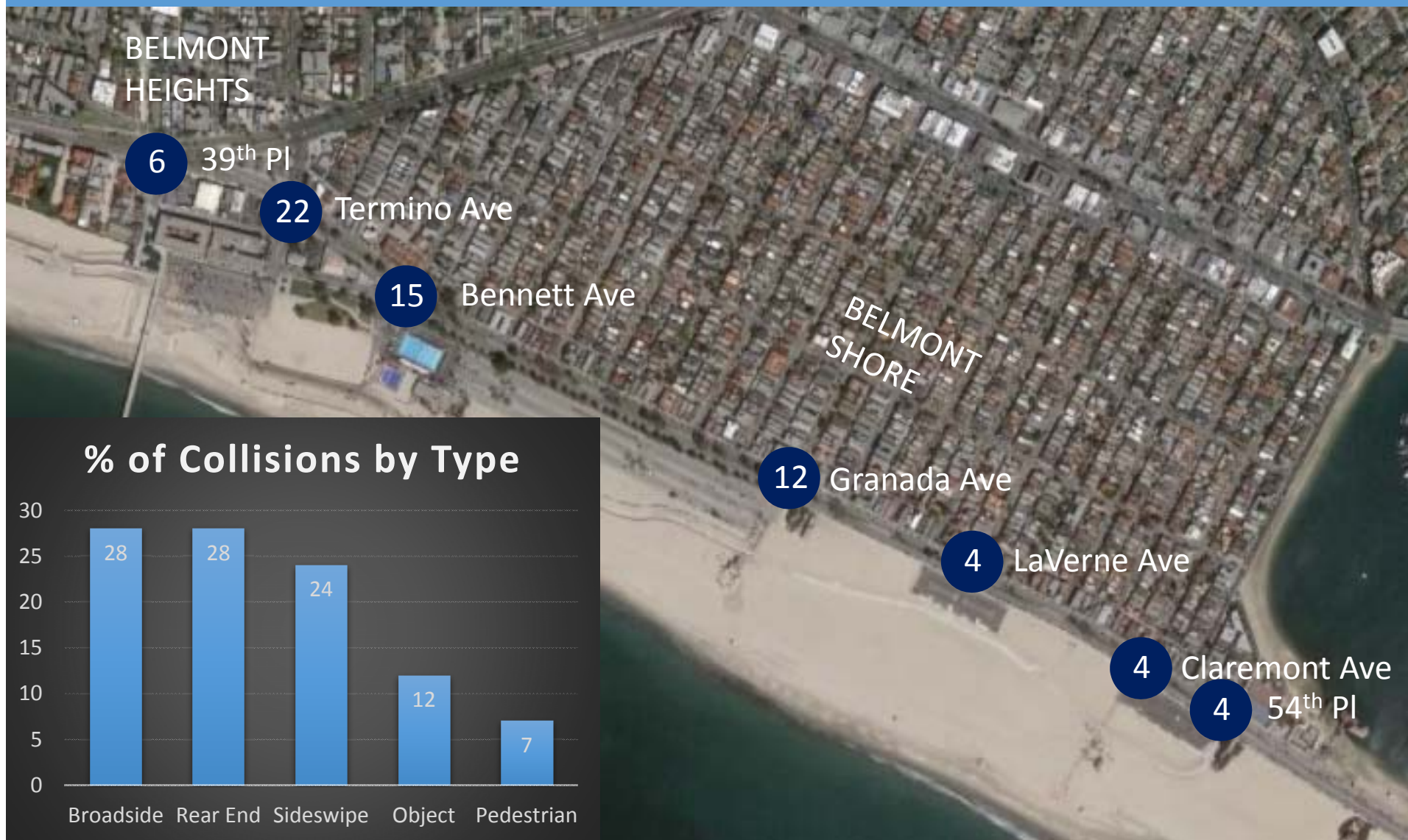
Ocean Boulevard Traffic Study Update

**June 30<sup>th</sup>, 2016**

1. Diagnose causes for chronic reports of speeding and difficult pedestrian crossings on Ocean Boulevard.
2. Assess feasibility of a “character change” on Ocean Boulevard, as noted in the mobility element of the city’s general plan.
3. Develop conceptual designs for improved pedestrian and cyclist access to the Belmont Pool and Pier area.



# 10 Year Collision History



136 collisions in study area (14/year)



# Roadway Design 101: Level of Service

A: Vehicles move freely, rarely influenced by other traffic; Free-flow.

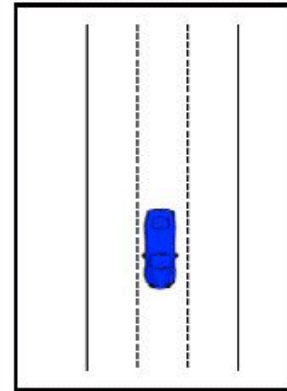
B: Vehicle flow is stable, with sporadic influence from other traffic.

C: Vehicle flow is stable, with moderate influence from other traffic.

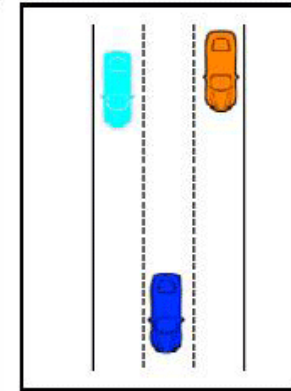
D: Vehicle flow is stable, with significant influence from other traffic.

E: Traffic at design capacity, lane changes are difficult.

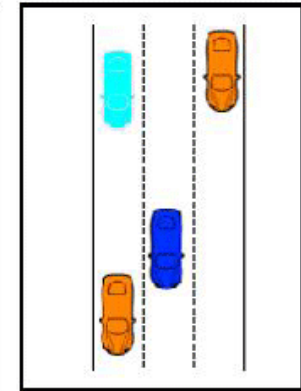
F: Over capacity. Congestion may begin extending into surrounding network.



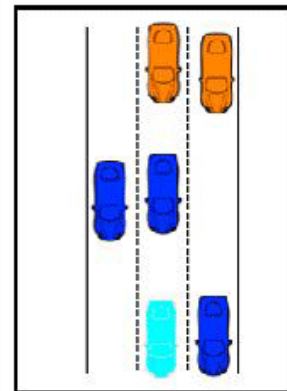
A



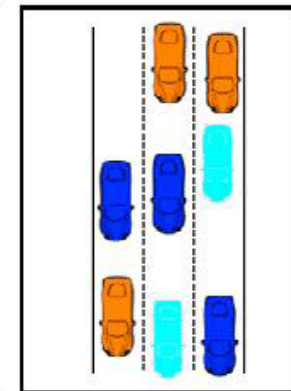
B



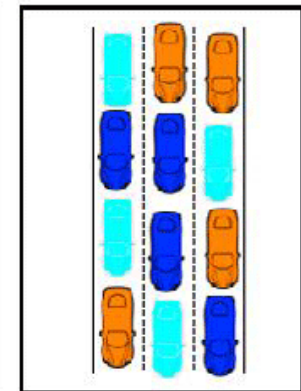
C



D



E



F



# Existing Level of Service

BELMONT  
HEIGHTS

A 1. Termino Ave

A 2. Bennett Ave

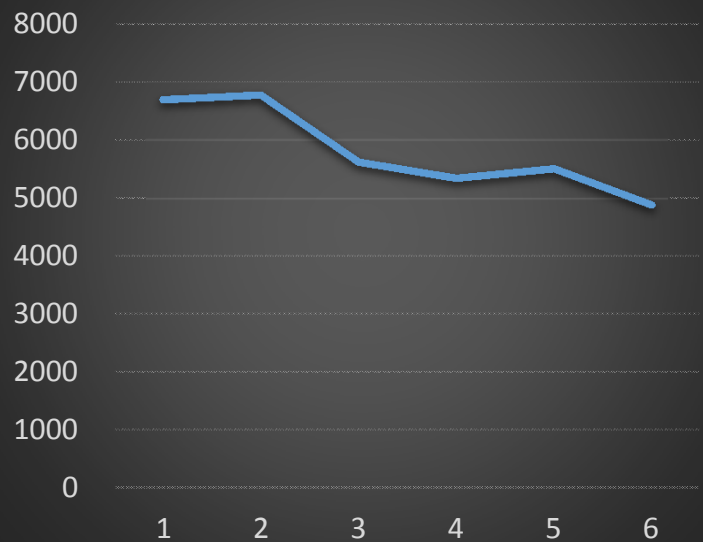
A 3. Granada Ave

A 4. LaVerne Ave

A 5. Claremont Ave

A 6. 54<sup>th</sup> Pl

## 24 Hour EB Volumes





# Road Diet: Level of Service

BELMONT  
HEIGHTS

B 1. Termino Ave

C 2. Bennett Ave

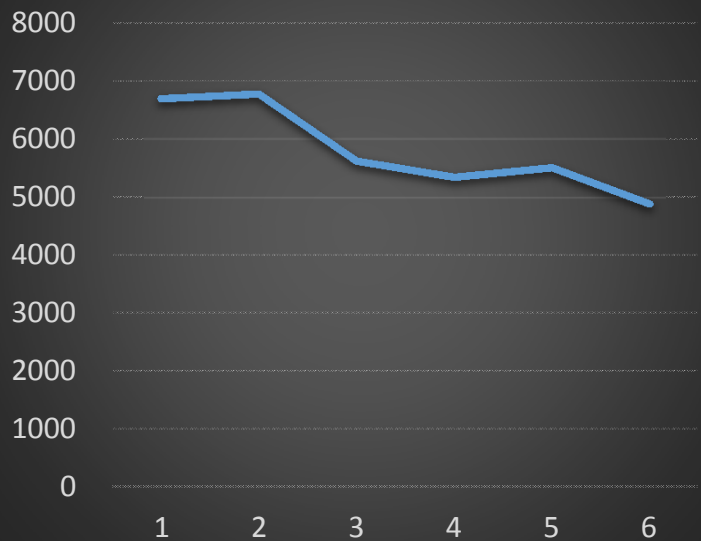
B 3. Granada Ave

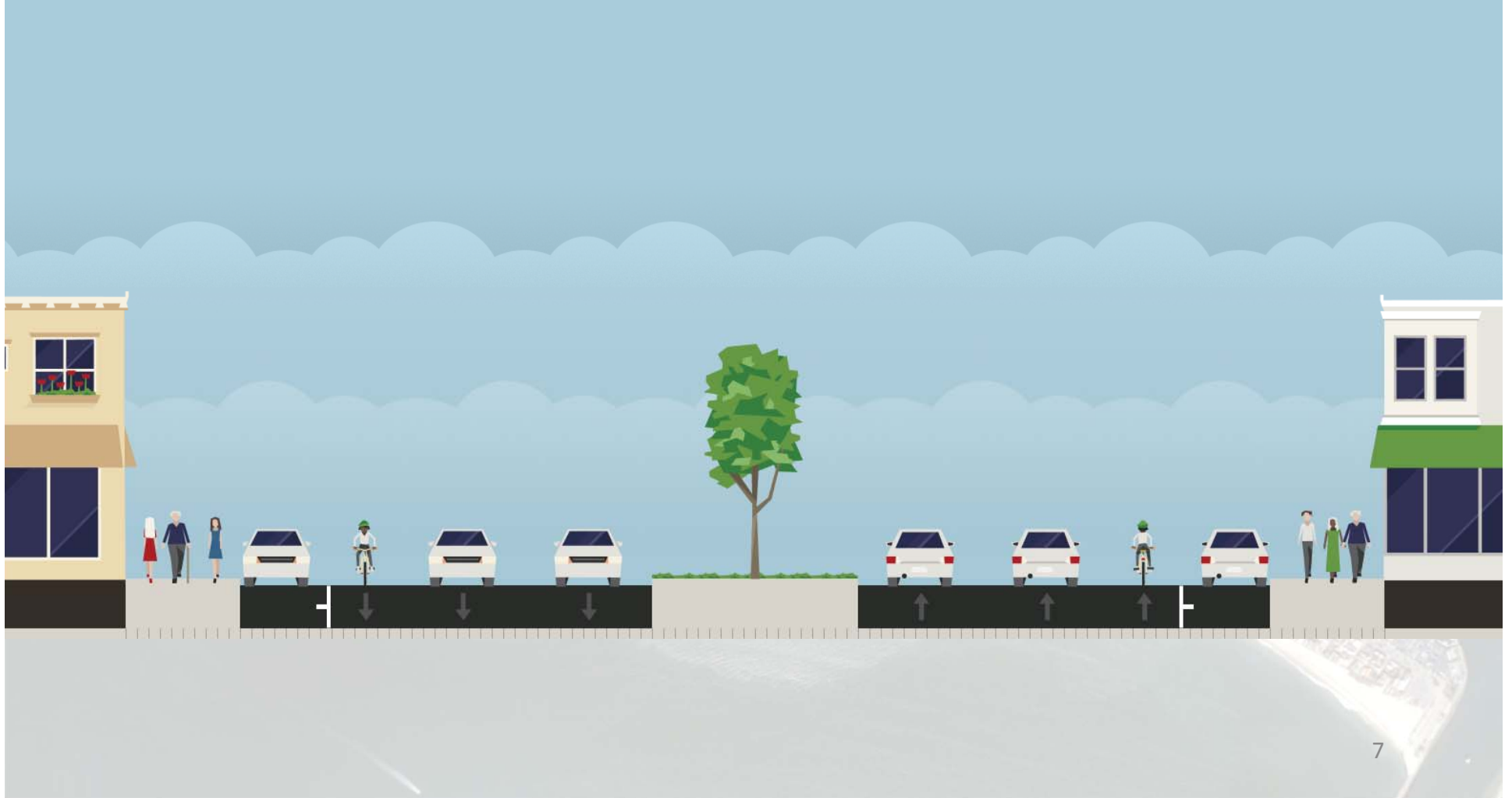
A 4. LaVerne Ave

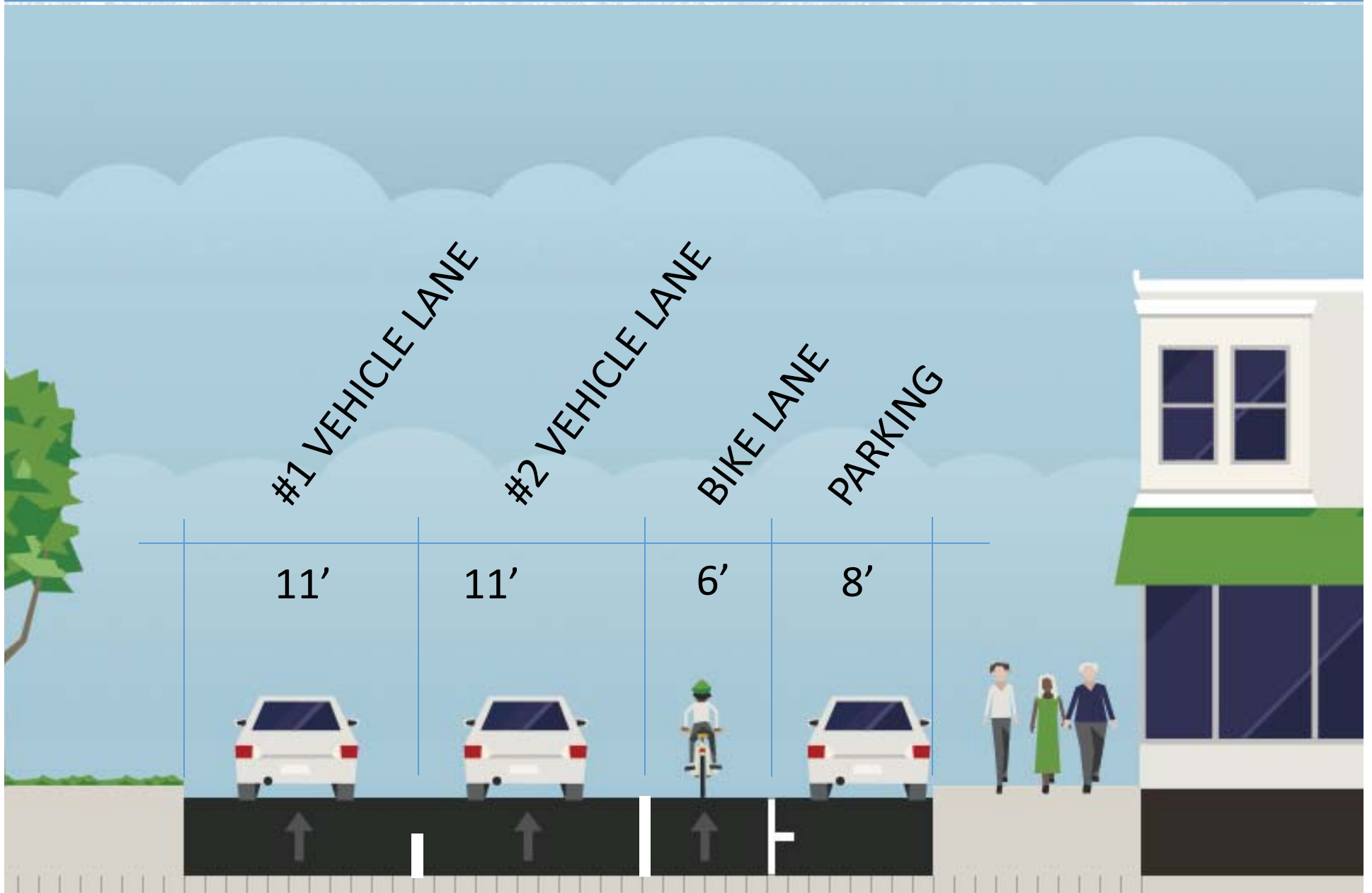
A 5. Claremont Ave

A 6. 54<sup>th</sup> Pl

## 24 Hour EB Volumes



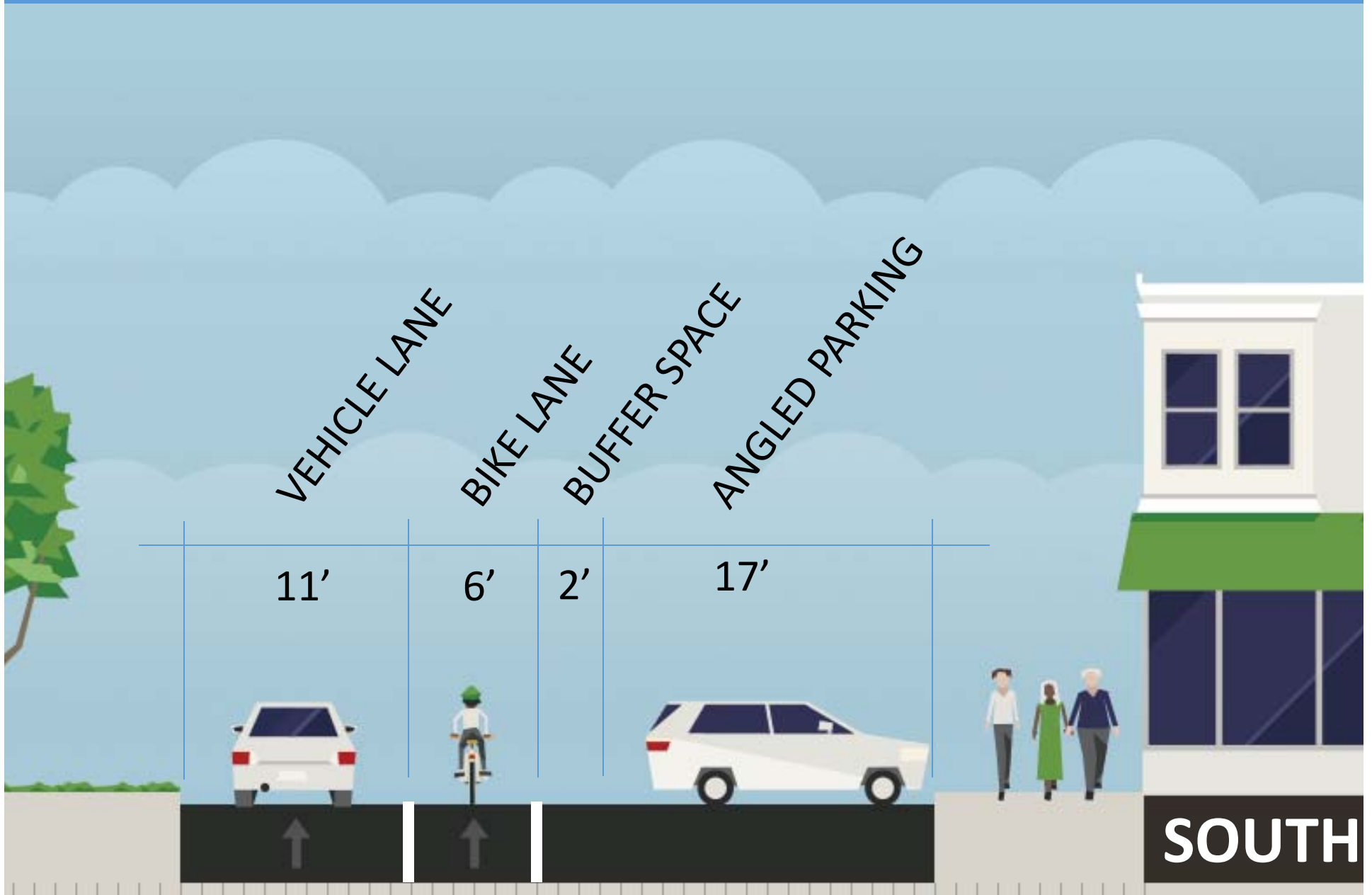




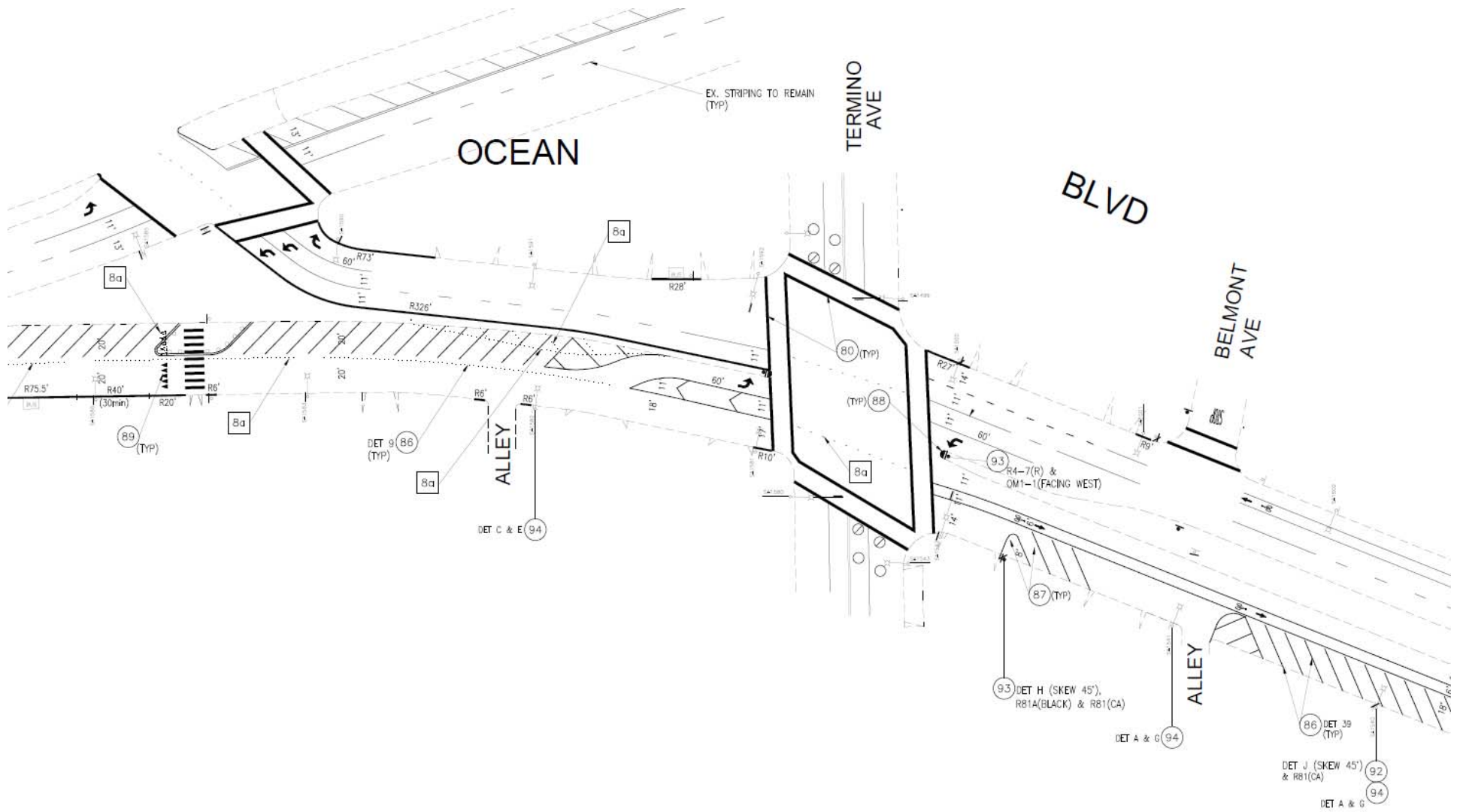




# Angled Parking









Questions?